

Wick Cottage Newsletter 4.



Sorry for the late newsletter!

I hope you have had a lovely Jubilee bank holiday? and made the best of the long weekend!

Summer is on it's way! – Hooray!!



Last month..

We examined your Interior Seasonal personality, by looking through the attributes for each of the Seasons, this time we will add colours, texture and pattern so you can create a full picture of your Seasonal interior design personality.

When you get the full framework, it can then help you to design rooms and make styling choices that reflect your true personality, and make colour choices that feel right for you!



Spring personality.

Spring colours.

light, bright and bubbly colours!
Pale yellow, pink, peach, lilac
pale blue and mint greens!



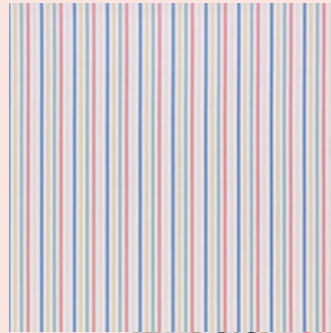
Spring textures

Think of fresh, light and bright fabrics,
cottons, ditsy prints, sheer voiles.
Furniture would be light woods /
timbers,
white washed ship lap.
Simple, elegant modern furniture.



Spring patterns.

Small ditsy floral prints, gingham,
polka dots and anything light and
bright, patterns that bring the
outdoors – inside!



The Spring room

The Spring room will be full of energy
and have a fun, fresh and light and
bright feel about it!



Summer personality

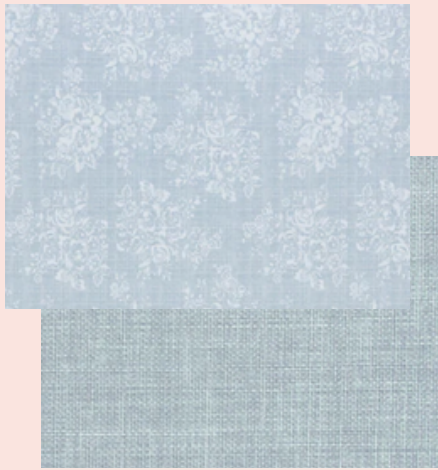
Summer colours.

Soft and muted, think of long, hazy Summer days!
Cool blues, soft purples, muted beige and greys, soft pink.



Summer patterns.

Velvets in muted colours, linens, elegant patterns, water colours, faded and soft prints.



Summer textures.

Think of faded with a hint of elegance. soft and graceful, parquet floors, velvet, linen, soft cottons and silk. Expensive looking, antiques and marble.



The Summer room.

The Summer room will have a hint of elegance, old antiques, muted and soft colours.



Autumn personality

Autumn colours.

Rich and warm colours with a touch of intensity!

Earthy browns, rich greens, burnt orange, purples and rich creams.



Autumn patterns.

Rich and bold patterns, block prints, thick textural linens and patterns from nature – leaves and animal prints. Country house styling! checks and Harris tweeds anything William Morris!



Autumn textures

Anything hand made, knitted / crochet blankets, rich velvets, thick textural linens, tactile fabrics, embroidery, heirloom fabrics, re-purposed fabrics.



The Autumn room

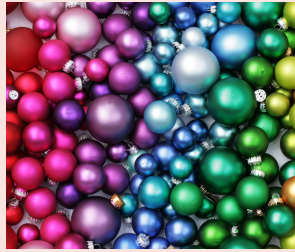
Feels cosy and warm, homely and lived in, authentic with a sense of Hygge! (newsletter 1) It will have heirloom pieces and collections of all kinds! especially books!



Winter personality.

Winter colours.

Bright and rich with jewel colours, teamed with white and the only colour palette to include black! Think the sparkle of Christmas!



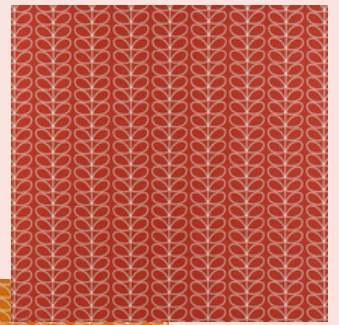
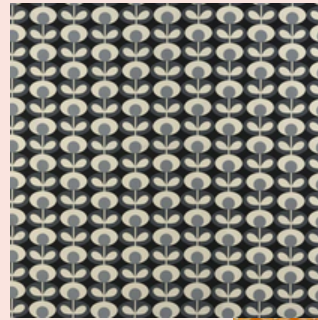
Winter textures.

Leather, marble, glass!
 Chrome and any surface that is cold and polished, velvet and silk.



Winter patterns.

Sharp lines, bold and bright patterns, block & geometric prints teamed with plain white. solid colours.



The Winter room.

A Winter room will be cool and full of high tech gadgets, it will have high end finishes and sharp clean lines. Modern and quite stark and minimalist.





Hopefully you now have a clear idea of your Interior Seasonal personality and a possible secondary season in which to support your interior choices!



Shop!

I will add a supportive colour and pattern sheet on the website to help your design choices!

- I have a shop on the website! It's only small but is expanding all the time! – check it out!
- All payments are supported safely by Stripe.
- I also know times are tough at the moment and curtains & blinds aren't the top priority, Please take advantage of paying over 3 months.

What's new at Wick Cottage!

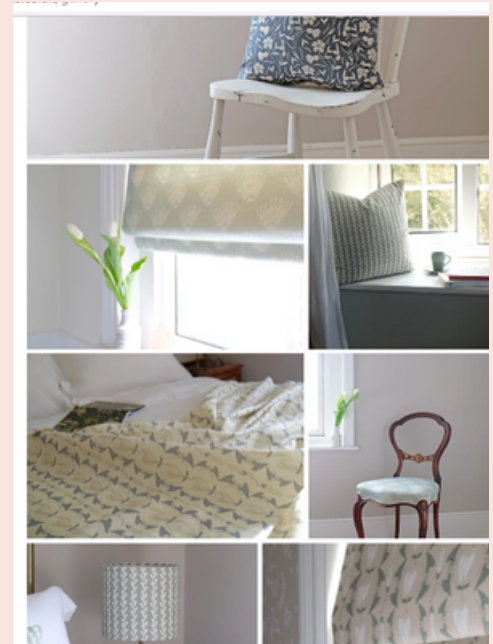


We are now proud to stock "Leaping Foxes" fabrics!

A gorgeous selection of printed linens, all made in the UK!



Some of this month's makes!



Thanks so much for spending the time to read my newsletter! I hope you enjoyed discovering your seasonal personality? Next month...

- Summer Coastal styling
- Designer fabrics 1.

